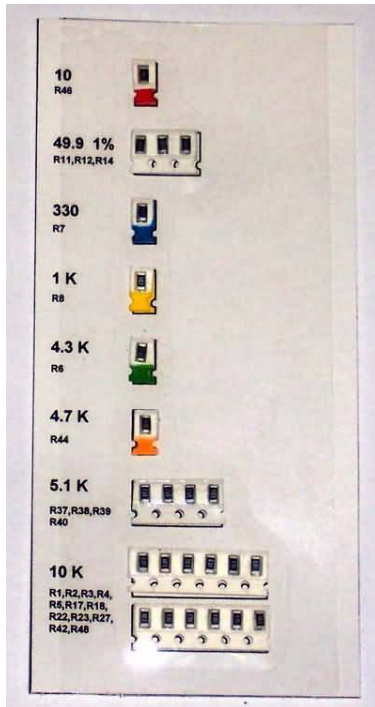


Section 2: Parts Inventory

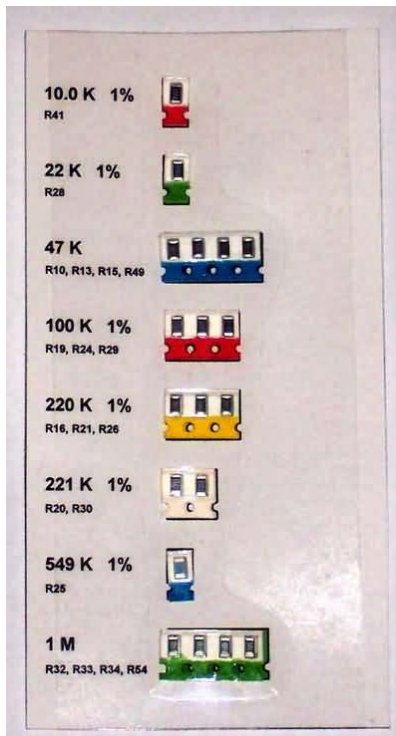
Carefully review the contents of each parts bag and component supplied in the kit to ensure that you have everything needed at the start of the project. If a part is missing, please contact us by email and we'll get it out to you right away.



SMT Cards Bag

Resistor Card 1

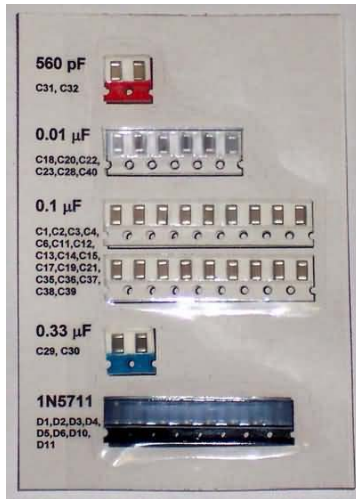
1	R46	Resistor, 10, SMT, 1206
3	R11, R12, R14	Resistor, 49.9, SMT, 1206, 1%
1	R7	Resistor, 330, SMT, 1206
1	R8	Resistor, 1K, SMT, 1206
1	R6	Resistor, 4.3K, SMT, 1206
1	R44	Resistor, 4.7K, SMT, 1206
4	R37, R38, R39, R40	Resistor, 5.1K, SMT, 1206
12	R1, R2, R3, R4, R5, R17, R18, R22, R23, R27, R42, R48	Resistor, 10K, SMT, 1206



SMT Cards Bag

Resistor Card 2

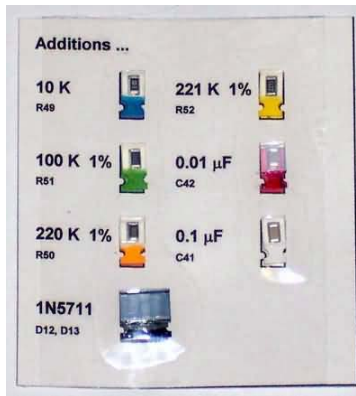
1	R41	Resistor, 10.0K, SMT, 1206, 1%
1	R28	Resistor, 22K, SMT, 1206, 1%
4	R10, R13, R15, R49	Resistor, 47K, SMT, 1206
3	R19, R24, R29	Resistor, 100K, SMT, 1206, 1%
3	R16, R21, R26	Resistor, 220K, SMT, 1206, 1%
2	R20, R30	Resistor, 221K, SMT, 1206, 1%
1	R25	Resistor, 549K, SMT, 1206, 1%
4	R32, R33, R34, R54	Resistor, 1M, SMT, 1206



SMT Cards Bag

Capacitor & Diode Card		
2	C31, C32	Capacitor, 560 pF, SMT, 1206
6	C18, C20, C22, C23, C28, C40	Capacitor, 0.01 uF, SMT, 1206
18	C1, C2, C3, C4, C6, C11, C12, C13, C14, C15, C17, C19, C21, C25, C26, C35, C36, C37, C38, C39	Capacitor, 0.1 uF, SMT, 1206
2	C29, C30	Capacitor, 0.33 uF, SMT, 1206
8	D1, D2, D3, D4, D5, D6, D10, D11	Diode, Schottky, 1N5711, SMT

Note: 'C35' shown in the 0.1 uF line on the card should read 'C25'.



SMT Cards Bag

Additions Card		
1	R49	Resistor, 10K, SMT, 1206
1	R51	Resistor, 100K, SMT, 1206, 1%
1	R50	Resistor, 220K, SMT, 1206, 1%
1	R52	Resistor, 221K, SMT, 1206, 1%
1	C42	Capacitor, 0.01 uF, SMT, 1206
1	C41	Capacitor, 0.1 uF, SMT, 1206
2	D12, D13	Diode, Schottky, 1N5711, SMT

NOTE: The 'R49' component on this card is a duplicate and will not be used.



Battery Holder Bag

1	LCD	Display, LCD, Hantronix, 16x2 STN, GRAY
1	J3	Battery holder, 8-AA cells
1		Flux Pen, No-Clean



Controls & Connectors Bag		
1	J1	BNC, pcb mount
1	J2	Serial port connector, DB9F
1	ENC	Rotary Encoder
1	J4	Coaxial power connector, 2.1mm
1	J8	Socket, 1x12 pos'n (DSP out)
1	J9	Socket, 2x10 position, (DSP in)
1	J11	Mini-DIN, 6 pos'n (KBD)
3	J6, J7, J12	Audio jack, 1/8", pcb mount
1	J10	Socket, 1x8 pos'n, right angle
1	J14	Mini-Din, 8 pos'n (AUX)
1	W1	Jumper, Flexstrip, (LCD)
2	P1, P2	Pinheader, 2x34 (HC908) (cut 2 from 2x72 strip)
2	P3, P4	Pinheader, 1x2 pos'n (MON) (cut from 2x72 strip)
3	C7, C33, C34	Capacitor, 1 uF, Electrolytic, SMT
2	C5, C26	Capacitor, 10 uF, Electrolytic
1	C27	Capacitor, 47 uF, Electrolytic
1	C24	Capacitor, 100 uF, Electrolytic
1	R45	Potentiometer, 10K, miniature, pcb mount
1	S2	Slide switch, pcb mount, SPST
5	PB1, PB2, PB3, PB4, PB5	Pushbuttons, SPST, momentary contact
1	SPKR	Speaker, miniature, 32-ohm
5		Pushbutton caps (black)
1		Heatsink - TO220
1		Knob, 1/4"-dia shaft, (ENC)
1		Nut, zinc plated, 4-40 (U1)
1		Machine screw, zinc plated, round head, 4-40 x 0.5" (U1)
4		Spacer, nylon, hex tapped, 4-40x0.25" (LCD)
6		Spacer, nylon, hex tapped, 4-40x0.375" (PCB+DDS)
16		Machine screw, pan slotted, #4-40x0.25" (PCB+DDS+LCD)
4		Machine screw, flat slotted, #4-40x0.25" (PCB-cover)
1		Desoldering Braid
1		Solder, 63/37 Eutectic, No-Clean Flux, @28 ga.

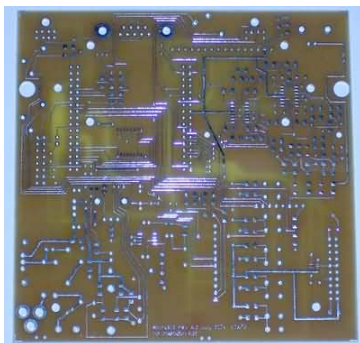


Overlay Bag (Included with Enclosure Option)		
1	Front panel overlay	
1	Side panel overlay	
1	End panel overlay	
1	End panel (drilled)	
1	End panel (undrilled)	
4	Enclosure screws	
4	Enclosure rubber feet	



Semiconductor Bag

1	U1	Voltage regulator, 3-terminal, 7805
1	U2	Memory, SEEPROM, 512Mb
2	U3, U4	IC, Op Amp, LMC6484, SOIC
1	U5	IC, Audio Amp, LM386, SOIC
1	U6	IC, Level Translator, TC7SET08F, SOIC
1	LED1	LED, T1-3/4 (BUSY)
2	Shunt	shunt, 0.1", 2 pos'n
3	D7, D8, D9	Diode, Schottky, 1N5817, DO-41
1	VR1 - DDS Option	Voltage Regulator, 78L08, 8V (optional, for use with regarg)
1	Q1	Transistor, NPN, 2N3904, TO92



PCB Bag

1	PCB	PC Board
---	-----	----------



HC908 Daughtercard Bag (Optional)

1	HC908	HC908 Daughtercard assembly
---	-------	-----------------------------



DSPx Daughtercard Bag (Optional)

1	DSPx	DSPx for Micro908 assembly
---	------	----------------------------



DDS Daughtercard Kit Bag (Optional)

1	DDS Kit	DDS Daughtercard Kit
---	---------	----------------------



Keyboard Cable Bag (Optional)

1	Cable	Keyboard extension cable (6')
---	-------	-------------------------------



Keyboard (Optional)

1	Keyboard	Dauphin Mini Keyboard
---	----------	-----------------------



Enclosure (Optional)

1	Enclosure	Pac-Tec LH-57 Enclosure (pre-drilled)
---	-----------	---------------------------------------